

B15SU-9/B18SU-9/B20SU-9



## 9 SERIES FORKLIFTS

Cushion Electric Stand-up Rider  
3,000 lb. to 4,000 lb. Capacity



# Product Features Overview

Intelligent Design

## Operator Comfort

- Adjustable height arm rest
- Back rest and knee pad
- Convenience devices
  - Cup holder
  - Clipboard holder
  - USB port
- Easy and instinctive display
- Floorplate suspension
- 8.5" low step height

## Superior Productivity

- Excellent visibility
- Ergonomic multi-functional control handle
- Small outside turning radius
- Quick and safe acceleration
- Programmable performance parameters

## Advanced Safety

- Unlimited ramp hold
- Automatic speed control
- Auto parking brake
- Emergency stop switch
- Guardian Stability System (GSS)
- LED lights standard
- Operator Sensing System (OSS)



### Low Step Height

- Convenience and safety
- Part of the 3-Point Entry System



### Integrated Entry Handle

- Safe entry/exit
- Part of the 3-Point Entry System



### Extended Back Rest

- Contoured and padded
- Reduces operator fatigue

### Durability Assured

- Heavy duty hydraulic steer axle
- Reliable AC controllers and motors
- Robust frame & overhead guard
- Rugged twin drive units

### Serviceability Simplified

- Simple to program with 'Easy View' system
- Quick-open covers
- Easy to access maintenance points
- Worldwide service network

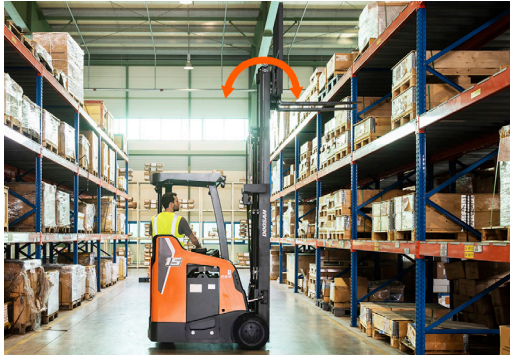


### Operator Compartment Features

- Clipboard holder
- Cup holder
- Steer wheel w/ soft grip knob
- Key switch
- Arm rest lifting button
- 3-Point Entry Eystem
- Knee pad
- Low step height
- Operator Sensing System
- Extended back rest with grab handle
- 'Easy-read' display
- Switch panel
- Emergency stop switch
- Storage tray
- 5V USB port
- 12V power jack
- Multi-functional control handle
- Adjustable arm rest

# Advanced Safety

## Operator Confidence



### Tilt Speed Control

Reduces the forward and backward tilt speed in order to minimize shaking of the load.



### Doosan GSS (Guardian Stability System)

- Reduces speed when cornering
- Decreases travel speed (up to 50%) when the mast is raised above the primary stage.
- Reduces forward tilt by 2 degrees when the mast is raised above the primary stage.
- Alarm sounds when mast is raised above the primary stage with the mast tilted more than 2 degrees.



### Battery Side Gate Interlock

The alarm sounds and the digital display shows an error message should travel be attempted.



### Unlimited Ramp Hold (Auto Parking Brake)

The electromagnetic auto parking brake (EPB) prevents the forklift from rolling back if the truck stops on a slope. Operators can step out of the truck without engaging a manual brake.



### AUTO STOP

### Doosan OSS (Operator Sensing System)

Whenever the operator leaves the truck, all travel and hydraulic functions stop. This system avoids any unintended forklift movements when the operator is not stepping on the presence pedal.



### Mast Lowering Interlock & Tilt Lock (ISO3691)

The hydraulic locking system prevents natural lowering and tilting. It safeguards the work space, the truck and the load even if the operator leaves the truck unattended.



### LED Lights & Blue LED Safety Lights (Optional)

LED lights are brighter and last longer than traditional sealed beams or halogen lights. Bright work lights and blue lights help prevent accidents, improving visibility and awareness of oncoming traffic, pedestrian warning and potential obstacles.

# Productivity Multiplied



### Excellent Visibility

The precisely designed overhead guard profile has an optimized bar thickness and arrangement, providing strength for safety and a clear view.



### ADVANCED ACCELERATION

### Responsive, Smooth Acceleration

- Quick & powerful acceleration
- Smooth & continuous travel



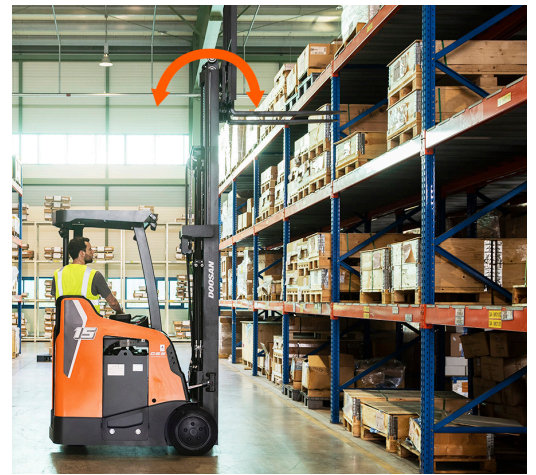
### 3-Post Overhead Guard

Outer mast aligned with front legs improve operator safety.



### High Visibility Mast

Neatly arranged hydraulic hosing and strategic placement of chains provide excellent visibility.



### Auto Tilt Leveling

Returns the mast back to vertical position via tilt angle sensor.

### Ergonomic Multi-functional Joystick Control Handle

Doosan's instinctive multi-function control handle provides smooth proportional control of all functions. The ability to operate multiple functions simultaneously increases overall productivity.



# Durability

Assured



## Reliable AC Drive & Hydraulic Motors

All AC motors means these motors are virtually maintenance free. Replacement of motor brushes and commutators is no longer necessary, saving hundreds of dollars in maintenance fees. Motors are IP43 rated for increased durability for any application.



## Hydraulic Steer Axle Mechanism

Doosan's heavy duty steer axle designs are all industry proven. The steer axles for the electric family are extremely robust and durable, providing long life and lower operating costs.



## Dependable AC Controllers

Curtis AC controllers provide an unbeatable combination of power, performance and functionality. IP65 rated controller means they are fully protected from dust, debris and liquids.



## Rugged and Durable Twin Drive Units

Individually controlled drive motors and drive units allow for precise handling during turns, wet, slippery or uneven surfaces.

# Better Serviceability

Peace of Mind

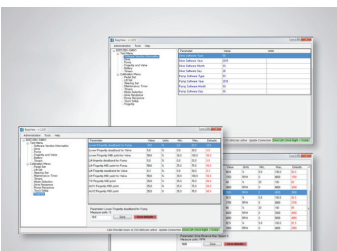
## Wide Opening Covers

Easily removable dashboard, tool-free front cover and knee pad cover provide quick access to all major components reducing downtime



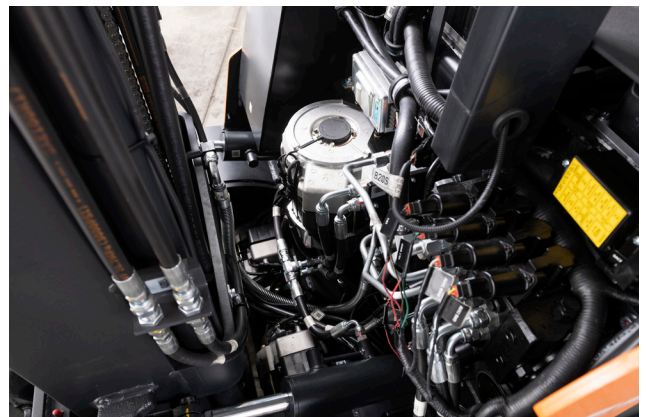
## Easy to Access Electronics

All major electronics are placed for easy maintenance



## Easy View

Use 'Easy View' for detailed performance parameter optimization and diagnostics requiring just your laptop



# Key Specs

## Major Specifications

		B15SU-9		B18SU-9		B20SU-9
Load Capacity/Rated Load	lb (kg)	3,000 (1,360)		3,500 (1,580)		4,000 (1,810)
Load Center Distance	in (mm)	24 (610)		24 (610)		24 (610)
Load Center, Drive Axle to Fork	in (mm)	12.6 (320)		12.6 (320)		12.6 (320)
Battery Compartment	in (mm)	16.5 (419)	18.2 (462)	18.2 (462)	20.5 (521)	20.5 (521)
Wheelbase	in (mm)	43.9 (1,115)	45.6 (1,158)	45.6 (1,158)	47.9 (1,217)	47.9 (1,217)
Aisle Width for Pallets 40" x 48", Crossways*	in (mm)	111.7 (2,837)	113.4 (2,880)	113.4 (2,880)	115.7 (2,939)	115.7 (2,939)
Aisle Width for Pallets 32" x 48", Lengthways*	in (mm)	117.7 (2,890)	119.4 (3,033)	119.4 (3,033)	121.7 (3,091)	121.7 (3,091)
Turning Radius	in (mm)	53.5 (1,360)	55.2 (1,402)	55.2 (1,402)	57.5 (1,460)	57.5 (1,460)
Travel Speed, Loaded/Unloaded	mph (km/h)	7.5 (12.0)/7.5 (12.0)		7.5 (12.0)/7.5 (12.0)		7.5 (12.0)/7.5 (12.0)
Lift Speed, Loaded/Unloaded	fpm (mm/s)	65 (330)/110 (560)		60 (305)/110 (560)		55 (280)/110 (560)
Lowering Speed, Loaded/Unloaded	fpm (mm/s)	98 (500)/89 (450)		98 (500)/89 (450)		98 (500)/89 (450)
Grade-ability, Loaded/Unloaded	% (Deg)	15 (8.5)/15 (8.5)		15 (8.5)/15 (8.5)		15 (8.5)/15 (8.5)
Battery Voltage, Amp Hour Capacity	V/Ah	36/930	36/1,085	36/1,085	36/1,240	36/1,240

## Standard Features

### Available Options

#### Safety & Stability

Auto Parking Brake/Unlimited Ramp Hold	Standard Features
Travel & Tilt Speed Control	Standard Features
Battery Side Gate Interlock	Standard Features
Doosan GSS (Guardian Stability System)	Standard Features
ISO 3691 Mast Lowering Interlock & Tilt Lock	Standard Features
LED Lights	Standard Features
Doosan OSS (Operator Sensing System)	Standard Features
Hydraulic Weight Scale (Dash Display)	Standard Features
Blue LED Safety Lamp	Standard Features

#### Productivity



Large 18" Drive Tire	Standard Features
Auto Tilt Leveling	Standard Features
Ergonomic Multifunctional Control Handle	Standard Features
Excellent Visibility	Standard Features
Smooth Acceleration & Travel	Standard Features
84.5" (2,146mm) Low OHG Height	Standard Features
Bottlers Tilt & Narrow Carriage	Available Options
Cold Storage Package	Available Options
Quick Disconnect Hydraulic Connector	Available Options

#### Operator Comfort

Low Step Height	Standard Features
Floor Plate Suspension	Standard Features
Extended Back Rest w/ Entry Bar	Standard Features
Knee Pads	Standard Features
Adjustable Arm Rest	Standard Features
Easy & Instinctive Instrument Panel	Standard Features
Operator Convenience Package	Standard Features
Storage Pocket	Standard Features
Key-less Start	Available Options
LED Operator Lamp & Fan	Available Options
Reverse Steering	Available Options

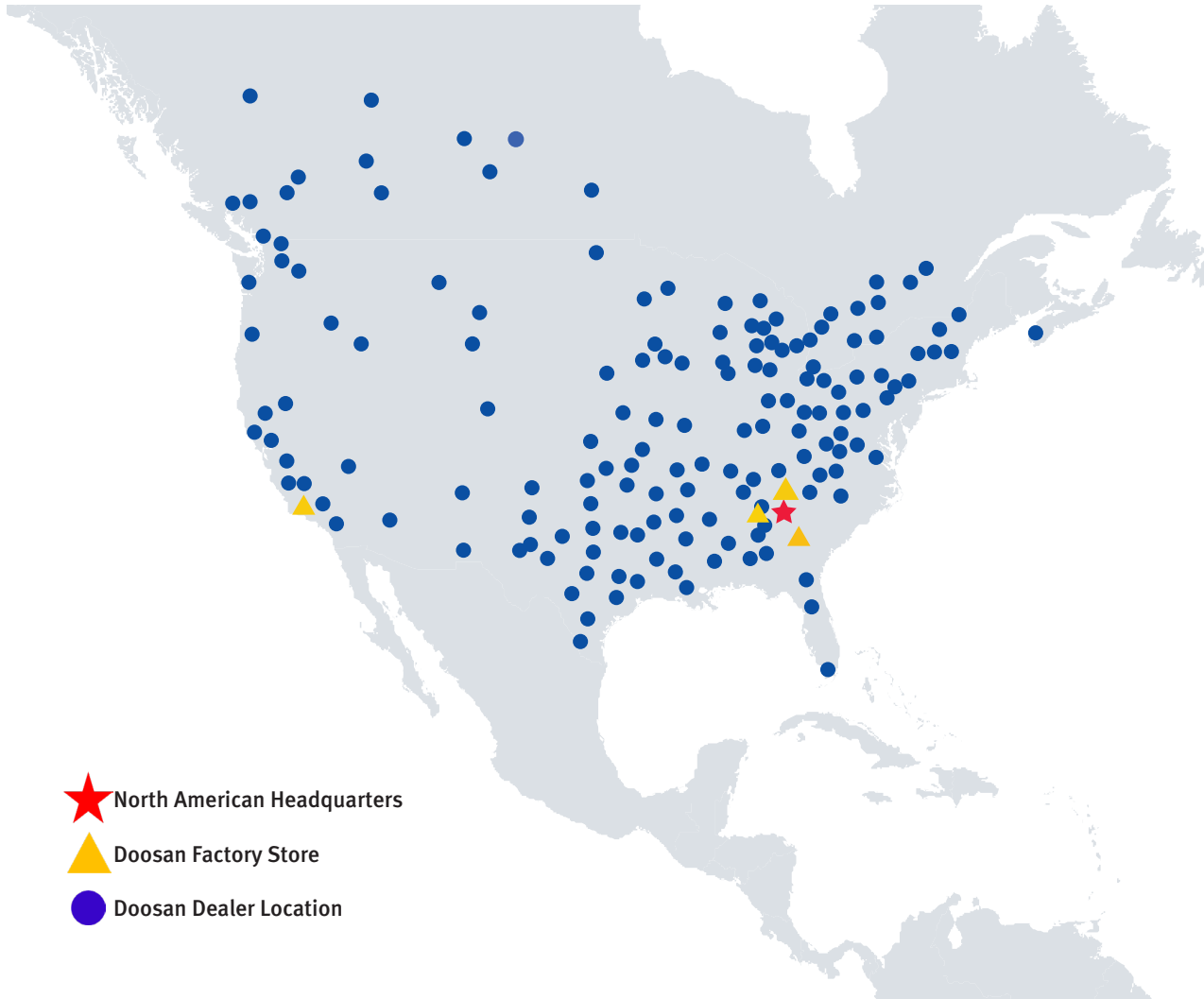
#### Durability & Serviceability

All AC Drive & Hydraulic Electrical System	Standard Features
Robust Frame & High Visibility OHG	Standard Features
Rugged and Durable Twin Drive Axle	Standard Features
IP43 Rated Drive & Hydraulic Motors	Standard Features
IP65 Rated Curtis Controller	Standard Features
'Easy View' Programmable Performance	Standard Features
Toolless Covers	Standard Features
Easy to Access Electronics	Standard Features
Cushion Poly Tire	Standard Features
Upper Drive Motor Protector	Standard Features

 Standard Features  
 Available Options

\* Remark: Standard features & available options may vary by country. Please contact your local dealer for more information. Aisle width calculated using the standard ITA method.

Oil Cooled Disc Brakes  
Operator Sensing System  
**EQUIPPED**



- North American Headquarters
- Doosan Factory Store
- Doosan Dealer Location

### ***Doosan's North American Dealer Network***

Doosan provides the best material handling solutions for your specific needs. From energy efficient electrics to robust internal combustion forklifts, Doosan is your full-line provider.



Doosan Industrial Vehicle America Corp.  
2475 Mill Center Parkway, Suite #400  
Buford, GA 30518  
P) 678-745-2200  
F) 678-745-2250  
[www.DoosanLift.com](http://www.DoosanLift.com)

PSCB20SU-9V1

AUTHORIZED DEALER